

Have you ever wondered...

- Why your sister looks like you?
- How medicines work?
- What DNA is?
- Do clones exist?
- Who Darwin was?

Study A Level Biology A to find out the answers.



OCR Biology A



OCR Biology A

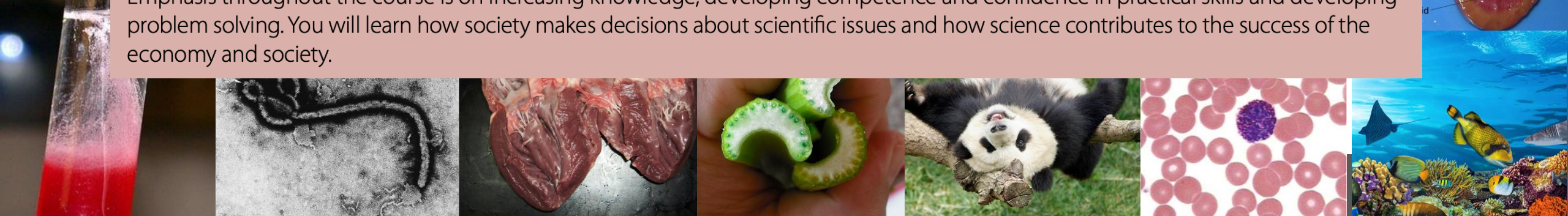
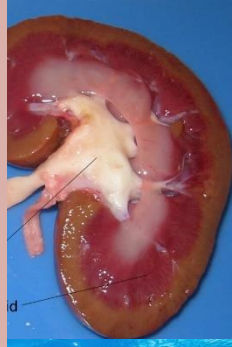
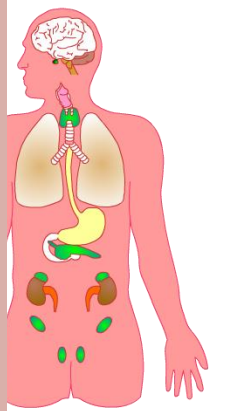
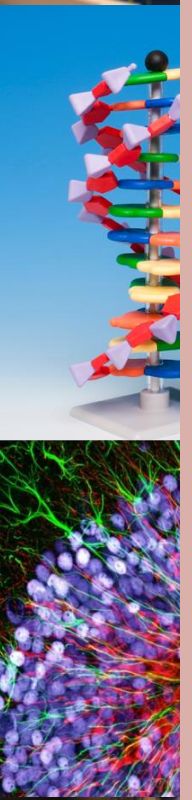
What's included

- Development of practical skills in biology
- Cell structure
- Biological molecules
- Nucleotides and nucleic acids
- Enzymes
- Biological membranes
- Cell division, cell diversity and cellular organisation
- Exchange surfaces
- Transport in animals

- Transport in plants
- Communicable diseases, disease prevention and the immune system
- Biodiversity
- Classification and evolution
- Communication and homeostasis
- Excretion as an example of homeostatic control
- Neuronal communication
- Hormonal communication

- Plant and animal responses
- Photosynthesis
- Respiration
- Cellular control
- Patterns of inheritance
- Manipulating genomes
- Cloning and biotechnology
- Ecosystems
- Populations and sustainability

Emphasis throughout the course is on increasing knowledge, developing competence and confidence in practical skills and developing problem solving. You will learn how society makes decisions about scientific issues and how science contributes to the success of the economy and society.



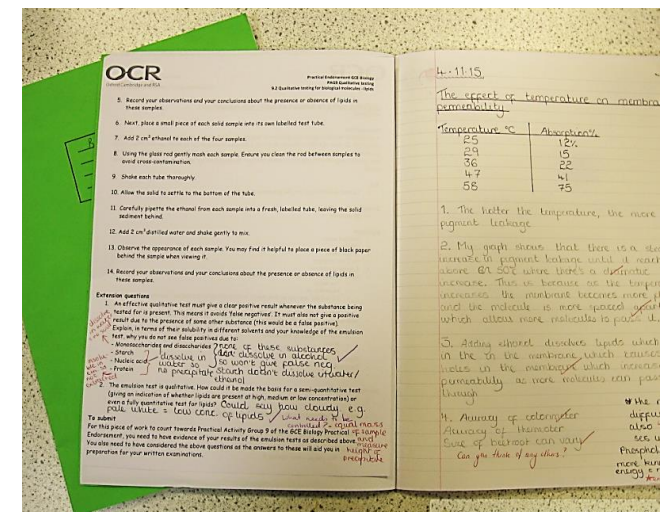
How will you be assessed?

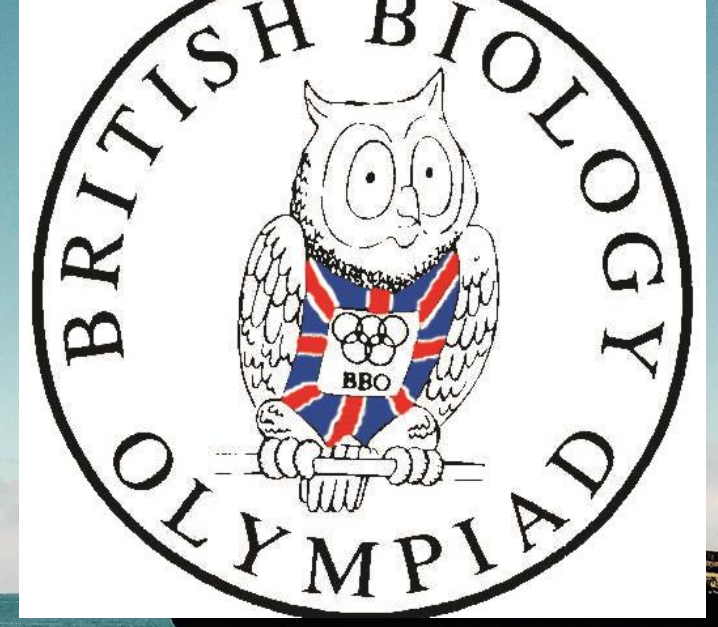
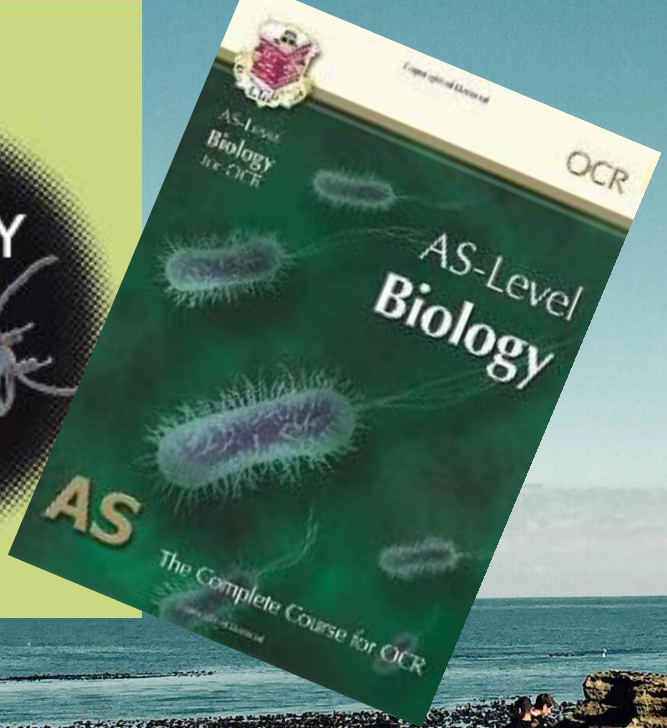
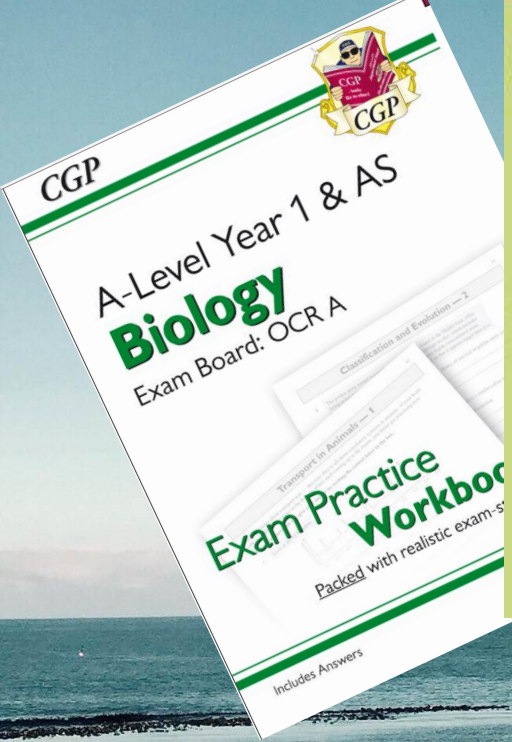
- Total of six hours of assessment split over three examination papers
 - 2 x 2 hours 15 minutes
 - 1 x 1 hour 30 minutes
- A wide range of question types including:
 - Multiple choice
 - Short answer questions
 - Extended response questions
- Opportunity to demonstrate your knowledge of both theory and practical skills throughout the examinations.

To achieve a Practical Endorsement, through a range of experiments, you will become competent in:

- Following procedures
- Applying an investigative approach when using instruments and equipment
- Working safely
- Making and recording observations
- Researching, referencing and reporting.

We are in the **top 25%** of schools in the **country** for **4-year ALPS** average (prior to summer 2020)





What else do we offer?



Scarborough 2021





Need to do some wider reading?
Not sure where to start?

Come and browse the NEW science library, with books and magazines to complement your A Level courses

- Improve the breadth and depth of your knowledge
- Give yourself an edge at interview
- Improve your exam technique with Review magazines
- Full list of books on moodle
- * Deposit required



What our
2021 leavers
have gone on
to do...



Medicine (OXFRD)

Biology (SHEFD/LOND/LANC/MANC)

Sports and Exercise Science (various)

Marine Biology (PORTS)

Biomedical Science (various)

Biochemistry (MANC)

Biological Sciences with placement year (WARW)

Biology + placement year (SHEFD)

Bioengineering (SHEFD)

Diagnostic Radiography (SALF)

Entry requirements



Grade 6 in separate science biology or **7-7** in combined science



Grade 5 in mathematics