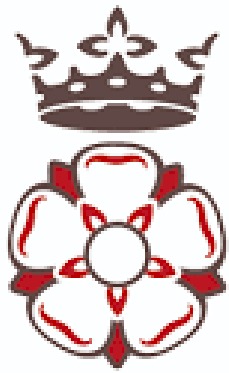




Health and Social Studies

Summer Booklet





King
Ecgbert
School

Introduction

Dear Students,

Welcome to the Introduction to Health and Social Care Summer Task Booklet. This booklet is designed to provide you with an engaging and informative way to explore the field of health and social care during the summer break. It will help you gain a deeper understanding of the sector and prepare you for your studies in the upcoming academic year.

The tasks in this booklet are compulsory, but they are designed to be self-paced, allowing you to work through them at your own convenience. Each task is accompanied by clear instructions and resources to assist you in completing them. We encourage you to make the most of this opportunity to enhance your knowledge and skills. Each task of the booklet will be graded Pass, Merit or Distinction. You can submit your work in various formats, including written reports, presentations, or digital media. Submission guidelines will be provided to you at the start of the new academic year. We hope that this task booklet will keep you engaged and motivated throughout the summer while deepening your understanding of the fascinating field of health and social care. Remember to allocate sufficient time for each task, and feel free to reach out to your teachers or mentors if you have any questions or need guidance.

Enjoy your summer break, and we look forward to seeing your completed tasks in the new academic year!

Best regards,
Miss H Newman
Head of Health and Social Studies.

Task 1:

Exploring Health & Social Care Careers

Research and compile a list of various careers within the health and social care sector.

Create a **visual presentation** or **infographic** showcasing the roles, responsibilities, and qualifications required for each career.



Task 2:

Understanding Ethical Issues in Health and Social Care

Choose an ethical issue within health and social care (e.g., confidentiality, consent, end-of-life care).

Research and **write a short essay** discussing the ethical considerations surrounding the chosen issue, and propose possible solutions.



Task 3:

Promoting Health and Well-being

Design a health promotion campaign targeting a specific health issue (e.g., obesity, mental health).

Create a poster or leaflet outlining the campaign's objectives, strategies, and key messages to raise awareness and encourage healthy behaviours.

NHS



**Better
Health**

**LET'S
DO THIS**

Task 4:

Reflective Journal

Keep a **reflective journal** throughout the summer, documenting your thoughts, experiences, and insights related to health and social care.

Reflect on any relevant news articles, personal observations, or interactions with individuals within the sector.

D

DESCRIBE

What Happened?

What did you do,
see, hear, read
etc?

I

INTERPRET

What does the
experience mean to
you?

What new insights or
connections have
you made from the
experience?

E

EVALUATE

What is your
opinion of the
experience? Why?

How valuable was
the experience?

P

PLAN

How will you apply
what you learned
in your future
course program,
career, life etc?

Task 5:

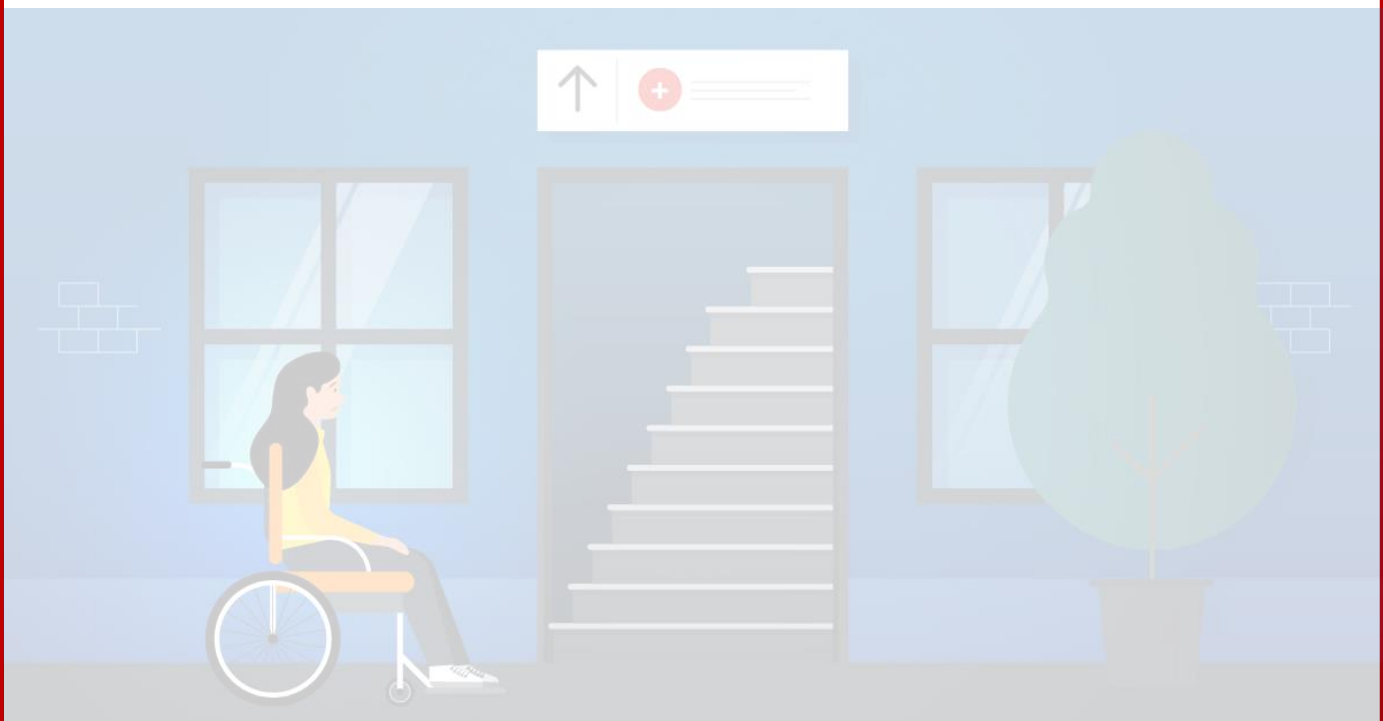
Current Issues in Health and Social Care

Select a recent news article or research paper discussing a current issue in health and social care. (i.e cost of living, health inequalities, impact of the pandemic or rising demand of mental health care....plus many more)

Write a critical analysis of the article, highlighting its implications for the sector and providing your own perspective.

How to write a critical analysis

- Choose your source material and read it carefully. ...
- Research the background to the source material thoroughly. ...
- Structure your argument around a main statement. ...
- Introduce main paragraphs with targeted topic sentences. ...
- Include a wide range of supporting evidence and data.
- Write a clear and inclusive introduction and conclusion to your analysis
- Edit, revise and finalise your analysis



Task 6:

The History of the NHS

Make a **leaflet** outlining the history of the NHS:

Include sections on:

- Healthcare before the NHS
- When/ why the NHS was produced?
- What the NHS mean?
- Significance of the NHS
- How is the NHS different in other countries

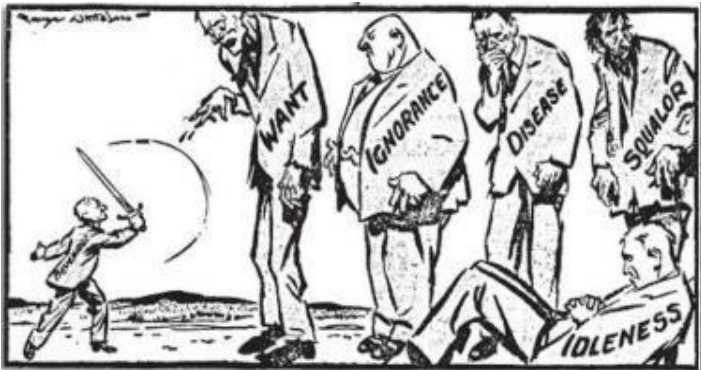
The Beveridge Report, 1942

In 1942, a plan had been presented by William Beveridge, a senior civil servant, detailing key areas for post-war reconstruction, aimed at establishing a national system of welfare for the people. It identified ‘five giants’ that were to be overcome: want, disease, ignorance, squalor and idleness.

When the Beveridge Report first appeared, it was welcomed by all the parties. There was broad agreement that protection needed to be provided for all members of society, and so when Labour came to power in 1945, they implemented the proposals in this report, thereby establishing the welfare state, a system which all governments after 1951 accepted in its essentials. This common acceptance became known as consensus.

Giant	The 1945 Labour Government’s Solution
Want	To be ended by National Insurance. The National Insurance Act created a system whereby the government, employers and History of employees all paid for insurance which would pay out in the event of unemployment, sickness, maternity and retirement.
Disease	To be ended by a comprehensive health service. The National Heath Service Act provided free medical and hospital treatment for all (the NHS).
Ignorance	To be ended by an effective education system. The Labour Party continued to support the Conservative’s 1944 Butler Education Act which provided free education within grammar schools, technical schools or secondary schools.
Squalor	To be ended by slum clearance and rehousing
Idleness	To be ended by full employment

The idealism that inspired the government’s welfare programme came at a heavy financial cost, which added to the financial burdens it inherited in 1945.



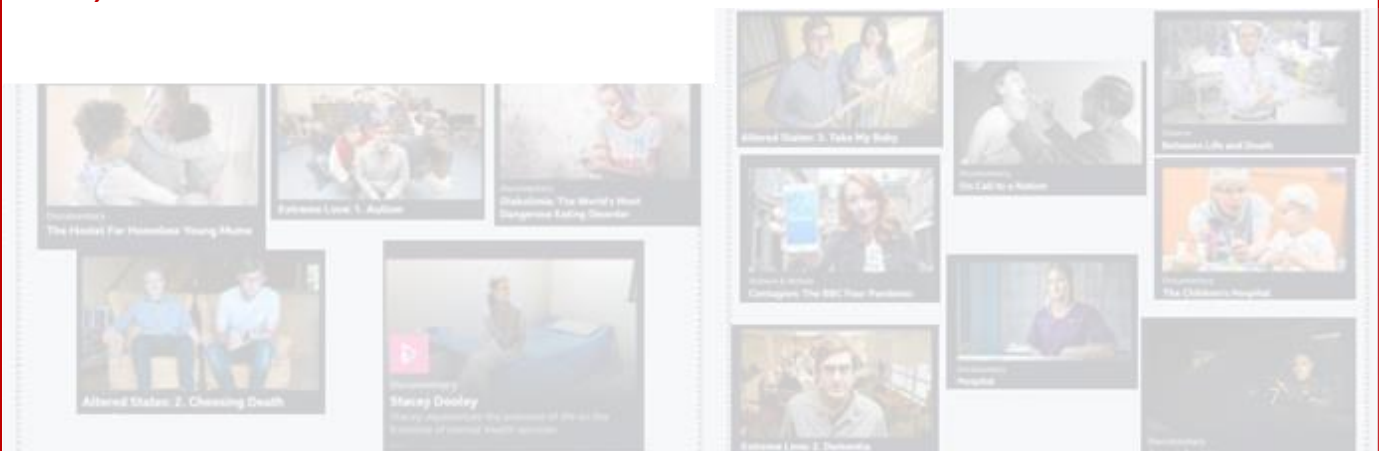
Health and Social Care in the media

Your task is to pick...

- You will then be asked to write an essay with the following title:**

Consider the following:

- This list is NOT exhaustive there may be other questions/ideas you wish to consider as you watch or read*



Task 8:

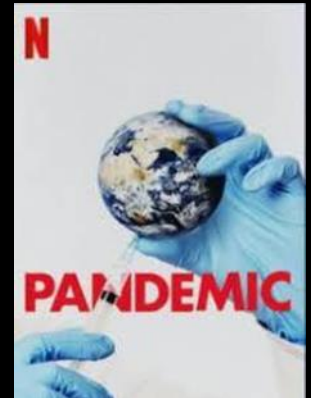
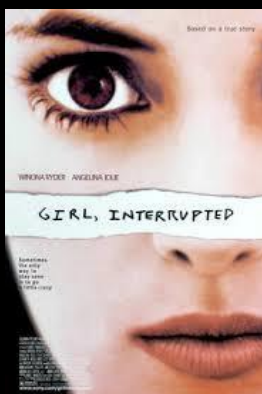
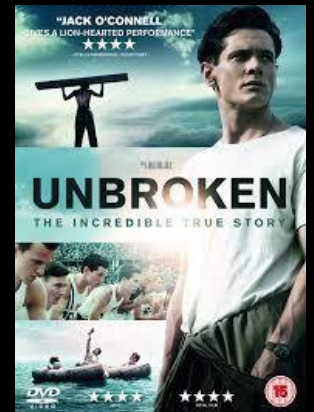
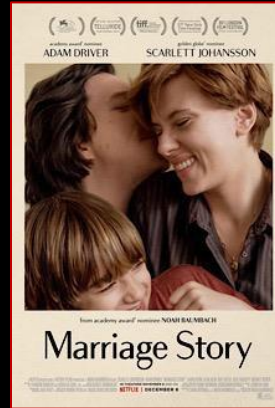
Learning Log

Record here any additional reading/viewing you are undertaking in order to show what you have been completing in order to prepare you for the

Use the reading list on the next slides you have been given for guidance on what you could watch/read. You will need to do a total of 5 before

[illegible]

NETFLIX



Recommended Watching for Health and Social Care

NON-NETFLIX

Elizabeth is Missing



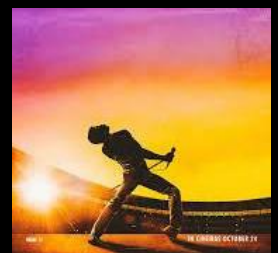
Rio & Kate: Becoming a step family



Jesy Nelson: Odd one out



Bohemian Rhapsody



Confessions of a Jr Doctor



Born to be different



Secret life of a a...Year old.



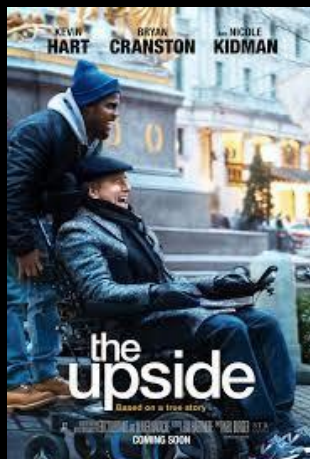
Still Alice



The Children's Act



The Upside



Beautiful Boy



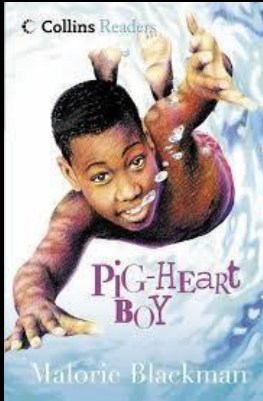
Miss you already



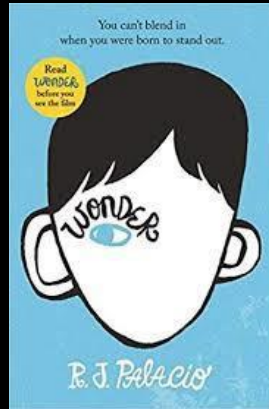
You can find these on: BBC iplayer, Amazon Prime, 4 on demand

NON-NETFLIX

Pig Heart boy by Marjorie Blackman



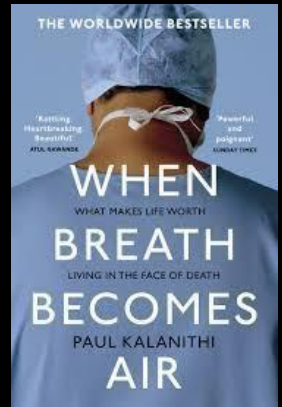
Wonder by R.J. Palacio



This is Going to Hurt by Adam Kay



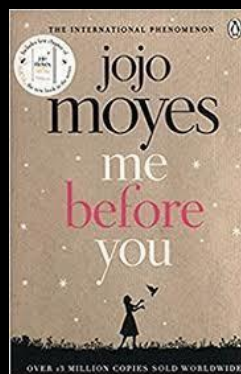
When Breathe becomes Air by Paul Kalanithi



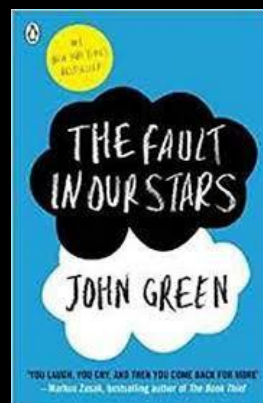
The Hate U Give by Angie Thomas



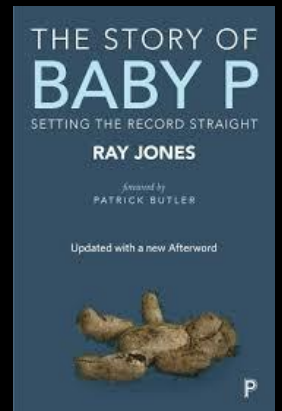
Me Before you by Jojo Moyes



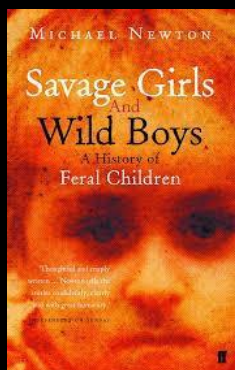
The Fault in Our Stars by John Green



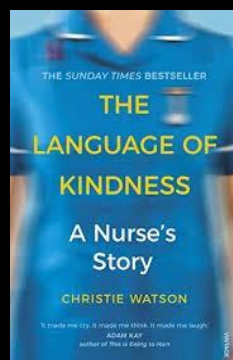
The Story of Baby P by Ray Jones



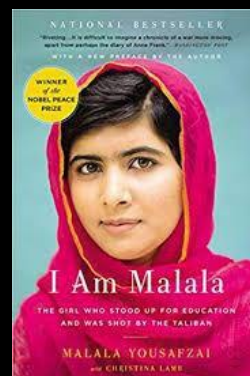
Savage Girls and Wild Boys by Michael Newton



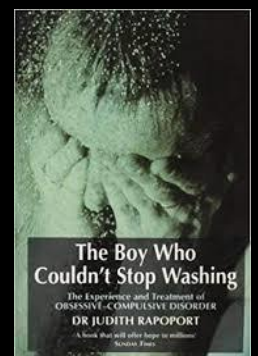
The Language of Kindness by Christie Watson



I am Malala by Malala Yousafzai



The Boy Who Couldn't Stop Washing by Dr Judith Rapoport



Task 9:

Glossary of key terms

Term	Definition	Symbol
Adolescence	An important status change following the onset of puberty during which a young person develops from a child into a adult.	
Advocate		
Attachment		
Care package		
Competence		
Compassion		
Development		
Discrimination		
Diversity		
Empathy		
Ethical		

Term	Definition	Symbol
Fine Motor Skill		
Growth		
Holistic Approach		
Integrity		
Milestone		
Nature		
Nurture		
Person centred approach		
Risk Assessment		
Safeguarding		
Self-Concept		
Self-Esteem		